



From bread to bricks

The new Kit Kat store in Crown Mines truly fills one with excitement for bulk savings. Starting from humble beginnings as street vendors selling samoosas, the group has opened six massive cash and carry stores as well as a multitude of express stores around South Africa.

The Kit Kat Crown mines mega-store lives up to its name, stocking over 20 000 line items, all sourced by an in-house team of buyers. The team negotiates bargains with suppliers to ensure customers are the real winners. This one-stop shop has products available in retail and wholesale pack sizes and offers everything from 'bread to bricks' at highly competitive prices.

Strict Covid-19 rules and regulations are followed, ensuring customers are safe whilst enjoying the shopping experience. With 69 operating till points, check out is sure to be a breeze.



Kit Kat mascots Kiki & Koko



The back of the employees' T-shirts show the timeline of store branch openings

At the exciting grand opening, the Kit Kat brand was front and foremost



A team of Kit Kat buyers



don't just touch,
sani-touch[®]
Infection Protection Products (Pty) Ltd



**Proud local manufacturer
of pre-saturated wipes, sanitisers,
cloths, dispensers and consumables.**

ENQUIRE NOW

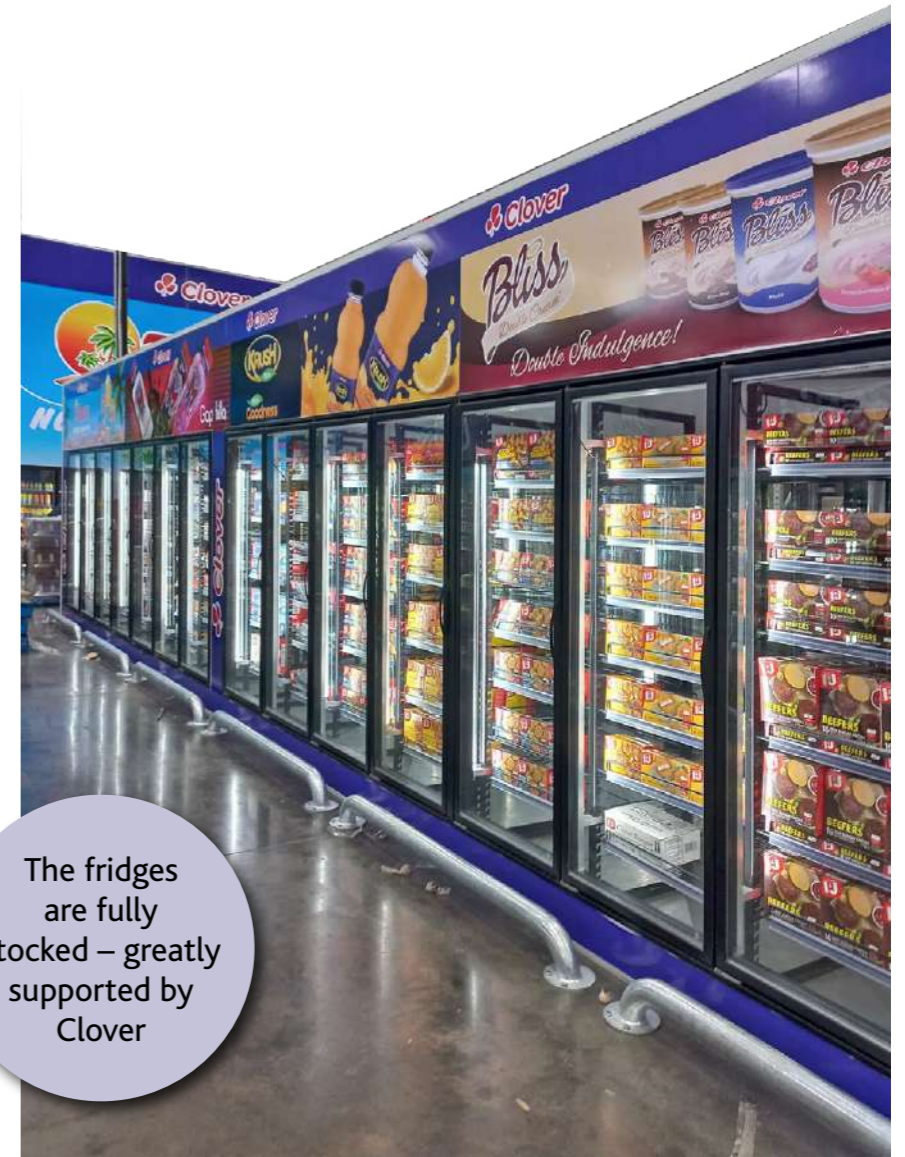
TO PROTECT YOUR STAFF AND CUSTOMERS
sanitouch@sanitouch.co.za

Trust the brand you know!
www.sanitouch.co.za

The group offers free delivery on pre-orders over R500. The store operates Monday to Friday 7.30am – 5pm, Saturday 7.30am – 4pm, Sunday 8am-1pm. The location of this store is easily accessible from the highway, has 608 parking bays, as well as a dedicated taxi drop-off zone.

The store employs a massive team of 300 staff, sourced from areas around the store, thus ensuring they give back to their local community with employment and empowerment. Kit Kat group has an internal skills development programme to train, upskill and uplift staff in all areas of the business.

Ahmed Gani, Chairman of the Kit Kat Group, adds: "We ascribe our success to you – our customers, our suppliers, and our team members. We believe that a company is its people and look forward to welcoming the Crown Mines community into our Kit Kat family – and serving you to the very best of our ability."



The fridges are fully stocked – greatly supported by Clover



A great range of Stark Ayres products for the budding gardener



Boldly branded gondola end stacked with dishwashing liquids



Plastic goods stocked to the roof

Want to improve your efficiency and profitability?

Integrated retail
management
solution

giving you the edge



Retail



Enterprise



Mobile



Financial
Integration



Loyalty



eStore



eReplenish



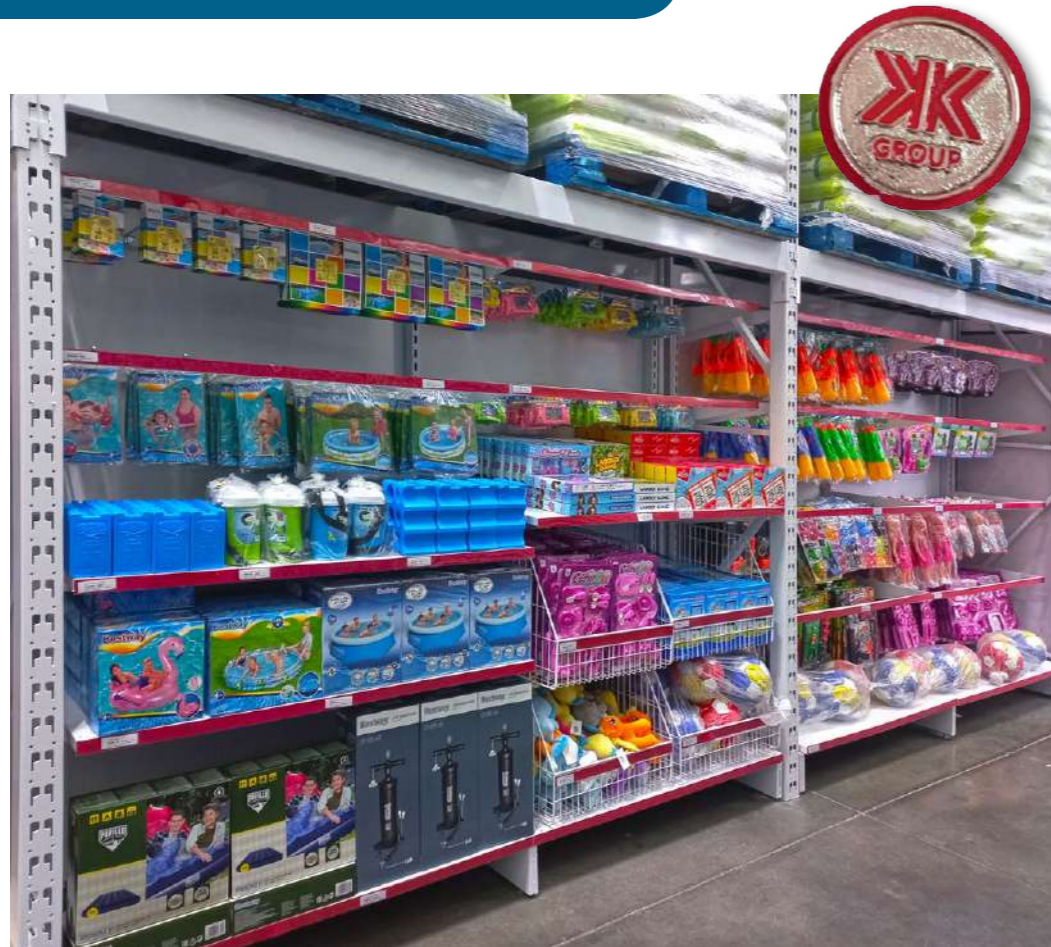
Value Adds



Fuel

+27 21 556 2724
webinfo@archsoftware.co.za
www.archsoftware.co.za





Kids toys available in bulk



Kitchen items for the aspiring baker



Kit Kat shopping bags are sponsored by well known brands



Eye-catching messaging is bold at Kit Kat



69 till checkout counters keep traffic flowing



Delivery vehicle ready to bring your orders to your door



Refreshments to keep you hydrated during your shop